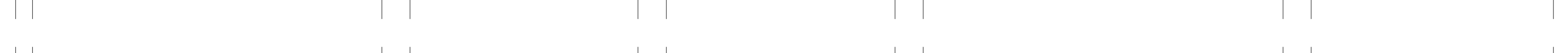
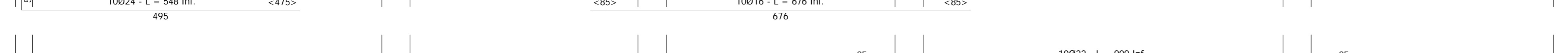
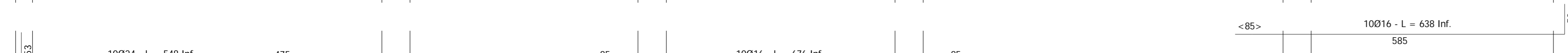
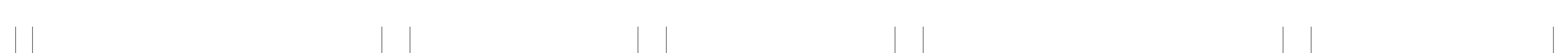
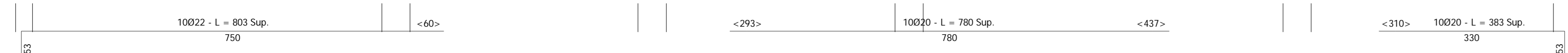
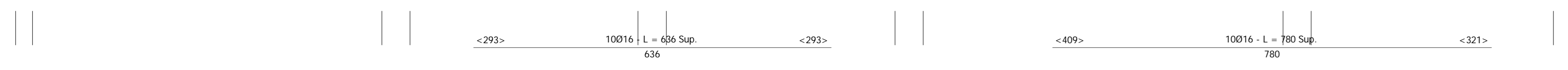
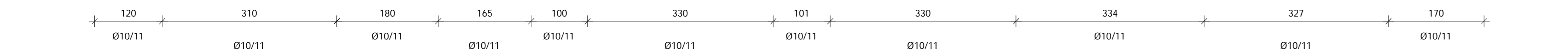
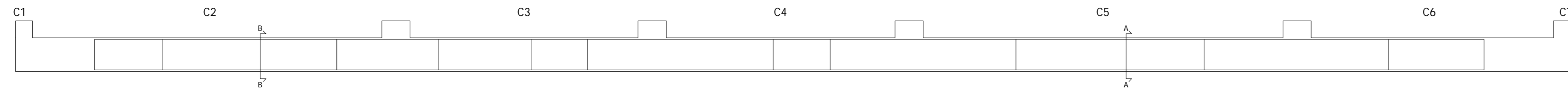
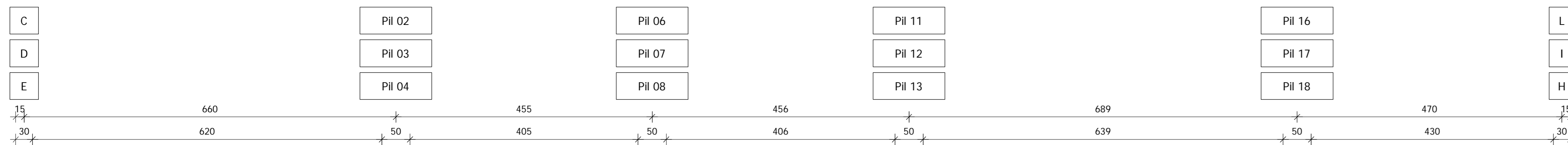


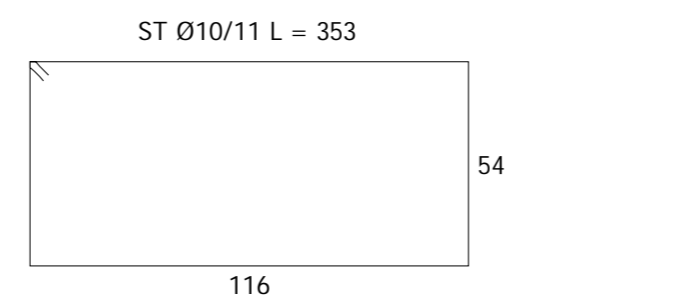
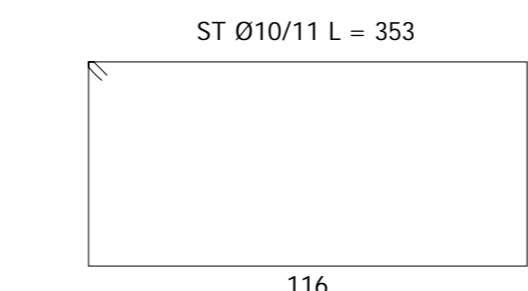
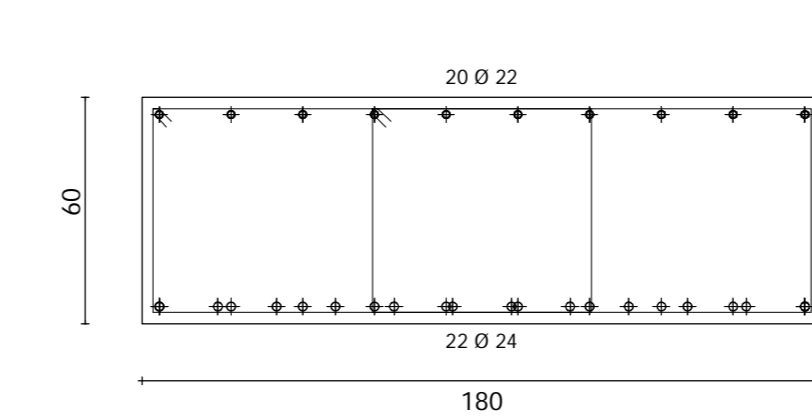
PORTATA TERRENO	MATERIALI	
s 1 < 1.00 Kg/cm <sup>2</sup>	2	Cordoli sopra muro armati con 3ø18+2ø12 staffati ø8/20"
MAGRONE	2	Su tutti i soali prevedere la stesura di rete elettrosaldata ø 10/20X20 se non diversamente specificato
Prevedere stesura di magrone di sottofondazione spessore 10 cm Cl.s. R'ck = 150 daN/cm <sup>2</sup>	2	Prevedere messa a terra equipotenziale delle gabbie di armatura secondo precise disposizioni impiantista elettrico
RIPRESE	3.5	
Pilastri ø16	50	Attenzione: prima di ogni getto avvisare la D.L.
Muri ø12/20"	50	
	LEGENDA MATERIALI	
	Murature portanti lapidee 2000	
	Fondazioni 2500	
	Murature portanti in C.A. 2500	
	Platee scale armate con 1ø12 superiore più 1ø12 inferiore incrociati nelle due direzioni passo 20"	
	REI 30	REI 60
	REI 90	REI 120
	RESISTENZA AL FUOCO DELLE STRUTTURE	

- fondazioni C - L / D - I / E - H -

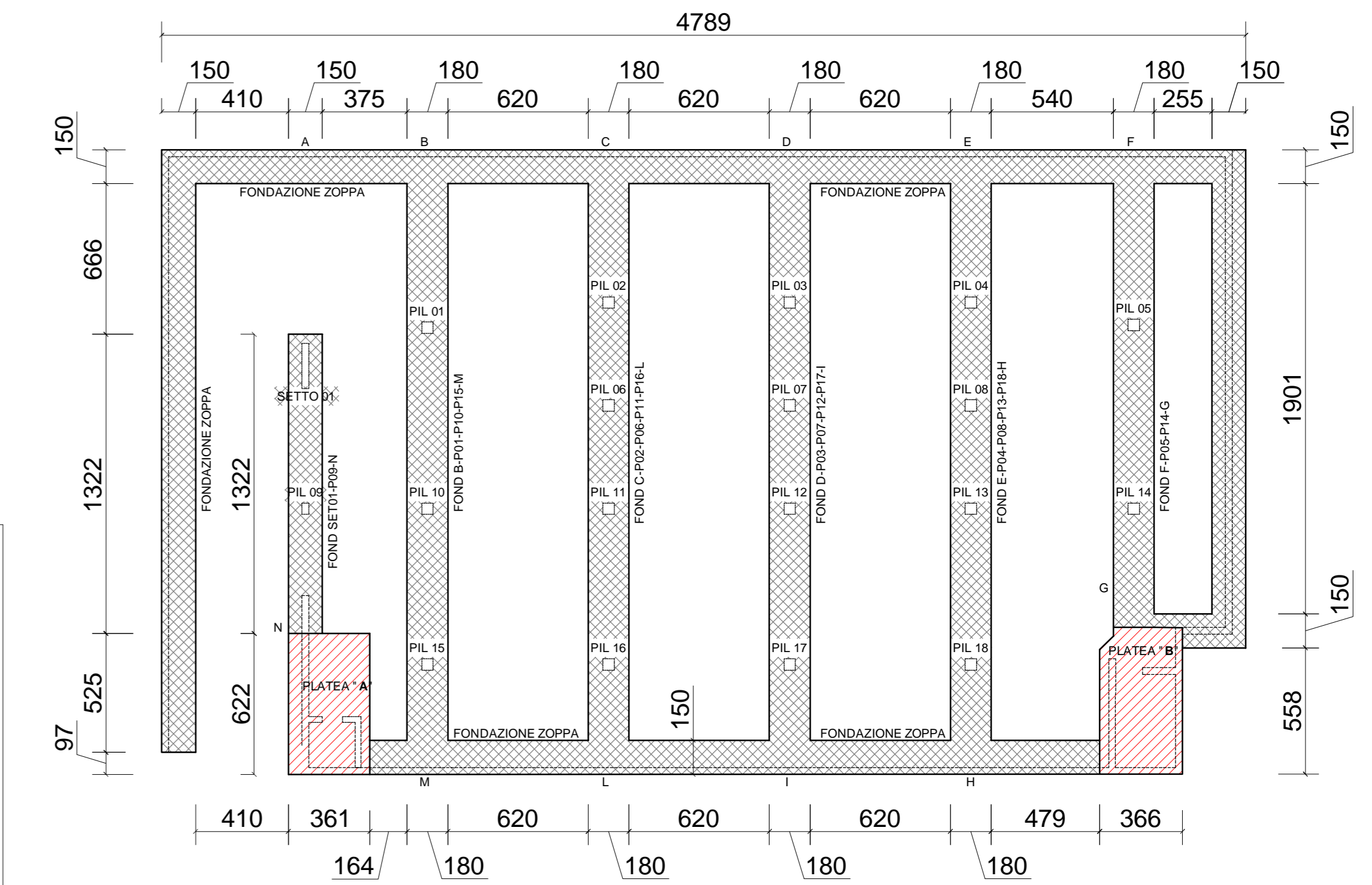
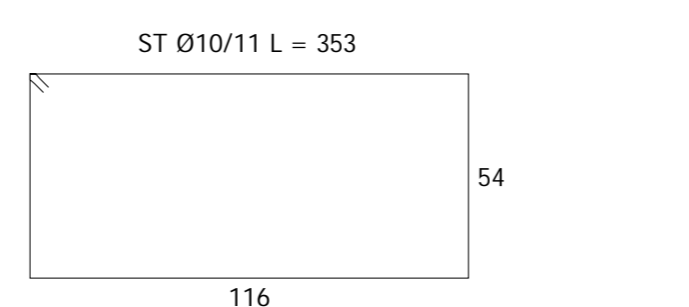
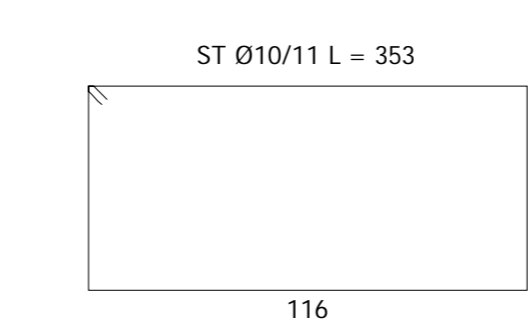
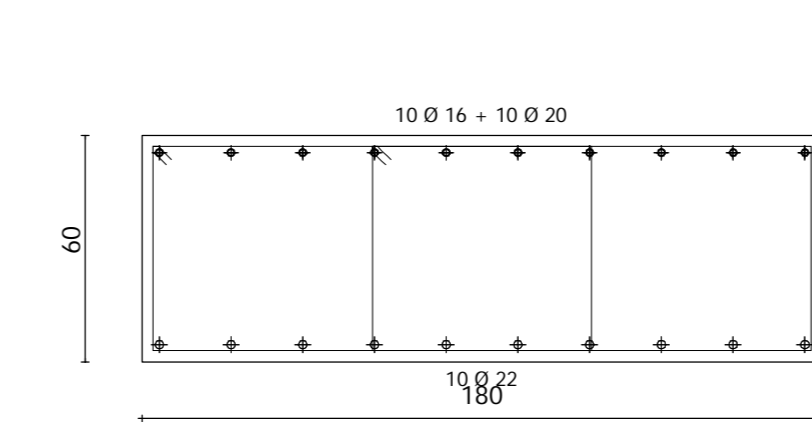
- fondazioni C - L / D - I / E - H - 1:50



Sezione B - B - 1:20



Sezione A - A - 1:20



PIANTA FONDAZIONI - 1:200

REGIONE LOMBARDBA  
COMUNE DI GAZZADA SCHIANO (VA)

**RIQUALIFICAZIONE DI PIAZZA GALVALIGI**  
PROGETTO DEFINITIVO-ESECUTIVO  
VARIANTE 1



RESPONSABILE UNICO DEL PROCEDIMENTO  
**Arch. Stefano Ferrari**  
PROGETTAZIONE ARCHITETTONICA E COORDINAMENTO  
**Studio di Architettura Carlo Alberto Maggiore**  
PROGETTAZIONE STRUTTURALE E IMPIANTISTICA

Ing. Massimo Speroni  
PIANO DI SICUREZZA E COORDINAMENTO

Arch. Marco Cavallari  
TITOLO ELABORATO

DE STR  
**04.1**

SCALA  
1:200 - 1:50 - 1:20

DATA  
23/01/2015

FILE  
-

COD. ELABORATO